



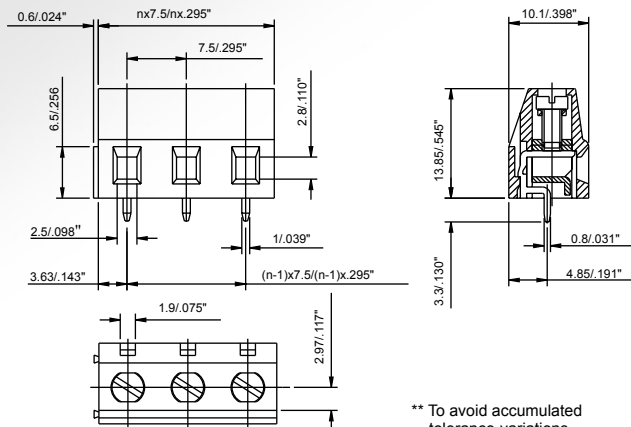
SERIES 373

Terminal Blocks For PC-Boards Stamping Type Insert

Front Wire Inlet Type - Screw On Top
Spacing 7.5mm or 15mm
Height Over PC-Board 13.85mm



373-031-14



Recommended P.C.B. Holes
diameter : $\phi 1.2\text{mm}$ to $\phi 1.4\text{mm}$
n= number of contacts

** To avoid accumulated
tolerance-variations
of Terminal-Blocks to
PC-Board spacing,
limit the number of
contacts to not more
than 24 contacts per row.

Technical Data

Material

- Contact:
(metal housing)
- Terminal screw:
- Surface
of solder tail:
- Insulator body:
(housing)

Brass (Cu Zn)
Cu/Ni, tin plated
Steel galvanized
and chromated

Tin plated
Poly Butylene
Terephthlene,
PBT (30% Glass Filled)
(UL 94 V-0)

Electrical

- Current rating: 20 Amp
- Resistance to tracking: 5M Ω
- Dielectric strength: 2500V
- Insulation withstands
voltage: AC 1500V/Min
- Rated voltage: 300V
- Conductor Size: 0.5 to 4mm²
- Stripping length: 7.5 to 8mm
- AWG: 22 - 14

Mechanical

- Operating
temperature: -30°C to + 120°C
- Short time peak
temperature: +200°C max



373-031-14

HOW TO ORDER :

