



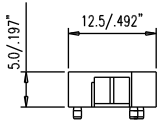
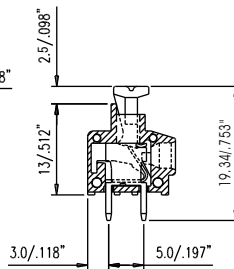
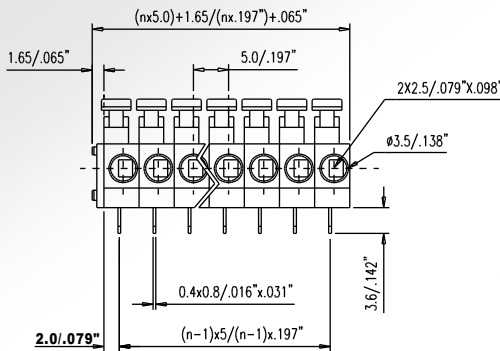
SERIES 385

Terminal Blocks For PC-Boards Screwless, Push Button Type

Front Wire Inlet Type
Spacing 5mm or 10mm
Height Over PC-Board 15.5mm



385-031-12



Recommended P.C.B. Holes
diameter : Ø1.2mm to Ø1.4mm
n= number of contacts

** To avoid accumulated
tolerance-variations
of Terminal-Blocks to
PC-Board spacing,
limit the number of
contacts to not more
than 24 contacts per row.

Technical Data

Material

- Terminal Body: Tin plated brass (Cu Zn)
- Contact Spring: Stainless strip steel
- Surface of solder tail: Tin plated Polyamide, PA66 (UL 94 V-0)
- Insulator body (housing):

Electrical

- Current rating: 10 Amp
- Resistance to tracking: 5M Ω
- Dielectric strength: 2500V
- Insulation withstands voltage: AC 1500V/Min
- Rated voltage: 250V
- AWG: 20 - 16
- Stripping length: 9 - 10mm

Mechanical

- Operating temperature: -30°C to + 120°C
- Short time peak temperature: +200°C max

HOW TO ORDER :

3	8	5	—	X	X	X	—	1	X
Series No.			No. of Pole			Pitch	Color		
						1 5mm	1 Grey		
						2 10mm	2 Blue		
							3 Black		