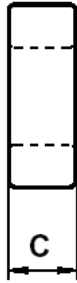
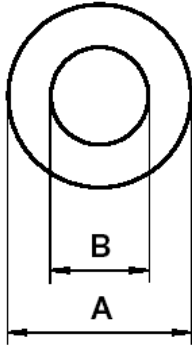




Specification for:  
**ZW-42212-TC**

111 Zeta Drive  
Pittsburgh, PA 15238  
Phone: 412/696-1333  
Fax: 412/696-0333  
Email:magnetics@spang.com

**DIMENSIONS**



(mm)	Uncoated Nominal:	Coated Min:	Coated Max:
O.D. (A)	22.1	21.63	23.07
I.D. (B)	13.7	12.75	14.15
Ht. (C)	12.7	12.43	13.47

Eff. Parameters		
A <sub>e</sub> mm <sup>2</sup>	l <sub>e</sub> mm	V <sub>e</sub> mm <sup>3</sup>
52.3	54.1	2834

**INDUCTANCE**

AL value (nH/T <sup>2</sup> )	Test conditions
12080 ± 30%	10 kHz, 0.5 mT (For N = 5, use 0.3 mA), 25°C

**ELECTRICAL LOSSES**

tan δ / μ <sub>i</sub>	Production lot limit Average	Test conditions	
≤ 3.5 · 10 <sup>-6</sup>	≤ 3 · 10 <sup>-6</sup>	10 kHz	0.5 mT, 25°C
≤ 55 · 10 <sup>-6</sup>	≤ 45 · 10 <sup>-6</sup>	100 kHz	

**COATING**

Epoxy rated for 200°C continuous operation.
Voltage breakdown rating 1500 V Min Wire-to-Wire.

**NOTE**

Spec. Modifications	Previous	Revised
2005.11.09	LF: General W material Breakdown voltage > 1,000 V	LF: Detail as indicated Breakdown voltage > 1,500 V