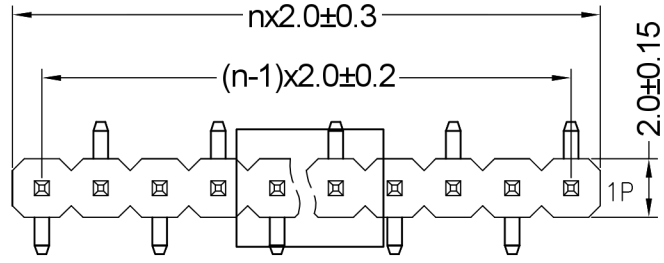
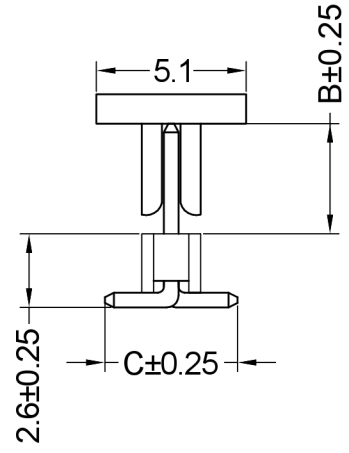
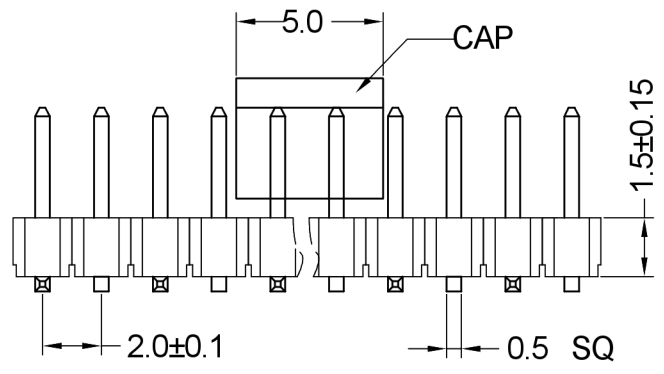


Layout B1

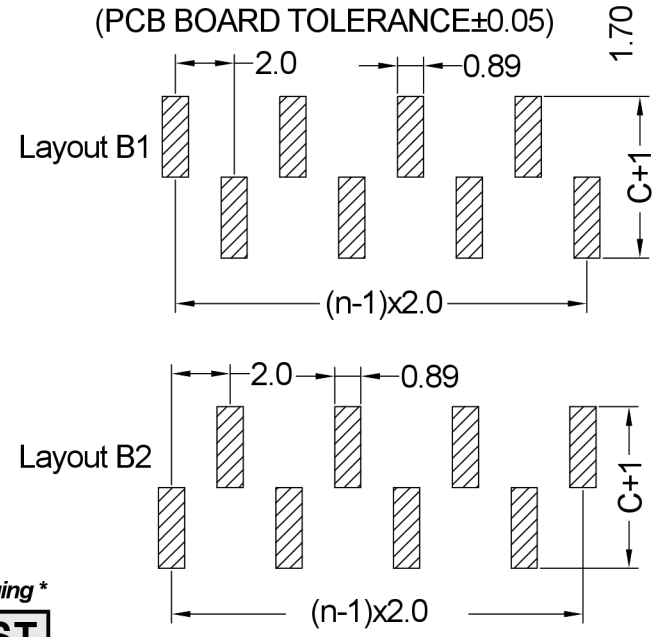


Layout B2



Insulator	Thermoplastic, rated UL94 V-0
Contact Material	Copper alloy
Contact Surface	Au over Ni
Contact Resistance	20 mΩ max.
Insulation Resistance	1000 MΩ min.
Test Voltage	500 V AC/DC
Current Rating	1.5 A
Temperature Range	-40 °C ... +105 °C
Processing Temperature	230 °C for 30-60 seconds (260 °C for 5 seconds)

Recommended P.C.B Layout(Top Side)
(PCB BOARD TOLERANCE±0.05)



Series	Contacts	Rows *	Dimensions *	Plating	Locating Pegs	Packaging *
46-7351	20 03-20	11 11 Einreihig B1 Single row B1 12 Einreihig B2 Single row B2	10 10 B=4,00 C=7,00mm 20 B=4,00 C=6,00mm 99 Kundenspezifisch Customer-specific	00 00 Vergoldet Gold plated	00 00 Ohne Pos.hilfen Wo loc. pegs	PPST ST In Stangen ohne Pick&Place-Pads / In tubes w/o Pick&Place-Pads PPST In Stangen mit P&P-Pads / In tubes with P&P-Pads PPTR Tape & Reel mit P&P-Pads / Tape & Reel with P&P-Pads

X.X	±0.30
X.XX	±0.20
X.XXX	±0.10
Angle	±3°
DIM	TOL



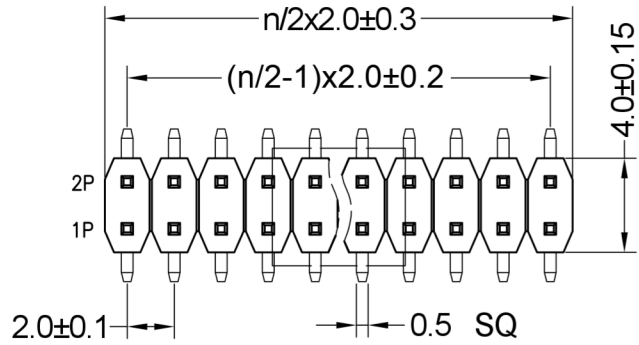
Serial Number 46-7351			
Part Name SMT Pin Header, 2mm Pitch, Vertical, Single Row			
Creation date 2020-04-09	Drawn AL	Approved PS	Approval date 2022-01-26
REACH (EG) Nr. 1907/2006 RoHS 2011/65/EU compliant		Scale %	Sheet 1/2

On release of the data sheet, previous releases are no longer valid. Dimensions and tolerances are subject to change.

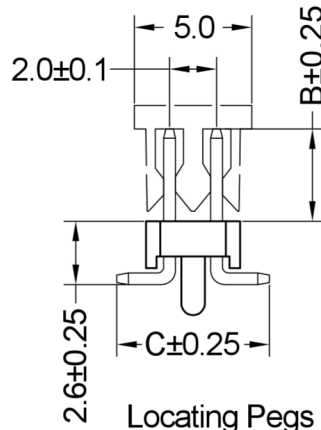
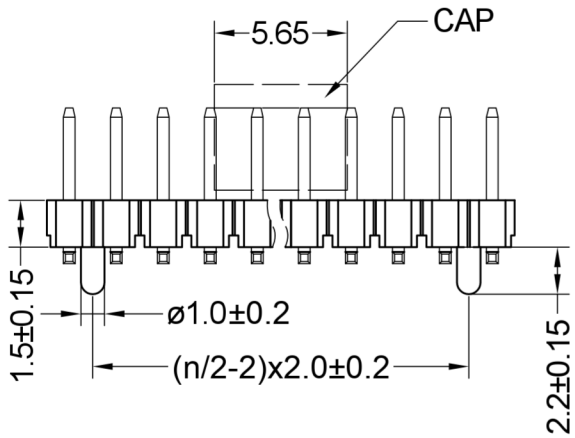
Copying of this document, and giving it to others and the use or communication of the contents thereof, are forbidden without express authority. Offenders are liable to the prosecution of the courts. In the event of the grant of a patent or the registration of a utility model or design.

On release of the data sheet, previous releases are no longer valid. Dimensions and tolerances are subject to change.

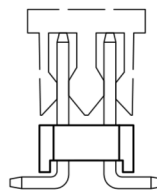
Copying of this document, and giving it to others and the use or communication of the contents thereof, are forbidden without express authority. Offenders are liable to the payment of damages. The copyright in this document, in the event of the grant of a patent or the registration of a utility model or design.



Insulator	Thermoplastic, rated UL94 V-0
Contact Material	Copper alloy
Contact Surface	Au over Ni
Contact Resistance	20 mΩ max.
Insulation Resistance	1000 MΩ min.
Test Voltage	500 V AC/DC
Current Rating	1.5 A
Temperature Range	-40 °C ... +105 °C
Processing Temperature	230 °C for 30-60 seconds (260 °C for 5 seconds)

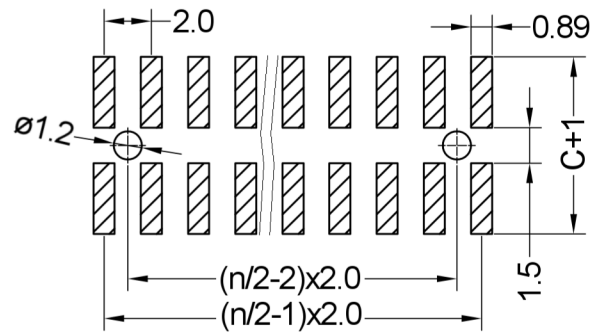


Locating Pegs
Option -10-



Without locating Pegs
Option -00-

Recommended P.C.B Layout (Top Side)
(PCB BOARD TOLERANCE ±0.05)



Series	Contacts	Rows	Dimensions *	Plating	Locating Pegs *	Packaging *
46-7351	40 04-40	20 20 Zweireihig Double row	10 10 B=4,00 C=7,00mm 20 B=4,00 C=6,00mm 99 Kundenspezifisch Customer-specific	00 00 Vergoldet Gold plated	00 00 Ohne Pos.hilfen W/o loc. pegs 10 Mit Pos.hilfen With loc. pegs	PPST ST In Stangen ohne Pick&Place-Pads / In tubes w/o Pick&Place-Pads PPST In Stangen mit P&P-Pads / In tubes with P&P-Pads PPTR Tape & Reel mit P&P-Pads / Tape & Reel with P&P-Pads

X.X	±0.30
X.XX	±0.20
X.XXX	±0.10
Angle	±3°
DIM	TOL



Serial Number 46-7351			
Part Name SMT Pin Header 2mm Pitch, Vertical, Double Row			
Creation date 2020-04-09	Drawn AL	Approved PS	Approval date 2022-01-26
REACH (EG) Nr. 1907/2006 RoHS 2011/65/EU compliant		Scale %	Sheet 2/2