

SLIDE SWITCH FOR P.C.B. ESP-SPDT SERIES



EXP10XX



EXP20XX



EXP30XX



EXP40XX

FEATURES

- The distance of 2 adjacent pins or stacked devices is 2.54 mm pitch
- All plastics are UL 94V-O grade fire retardant
- Low contact resistance and long mechanical life, suitable for signal switching and communication equipments.

APPLICATIONS

- Measuring point changeover switches
- Service switch
- Controls for consumer devices

SPECIFICATIONS

SPDT TYPE (ESP10,20,30,40 Series)

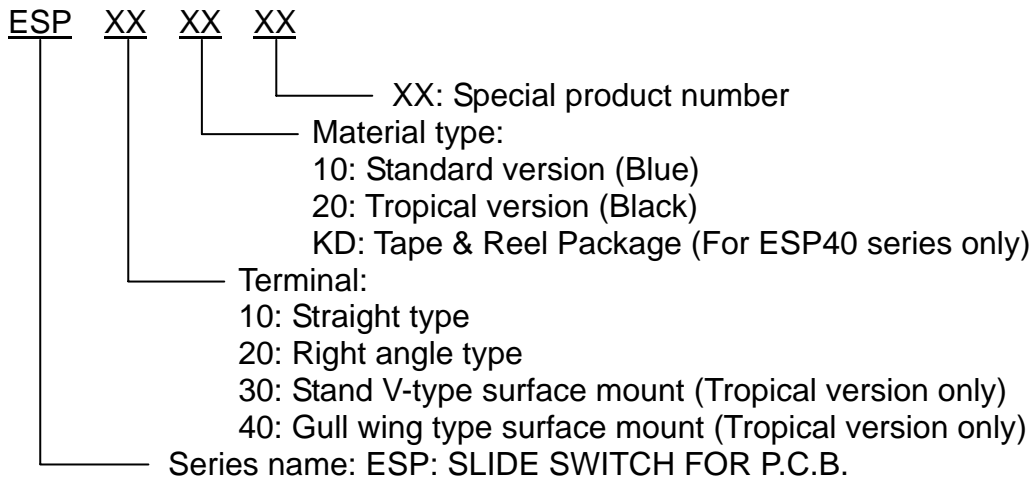
1. ELECTRICAL CHARACTERISTICS

1-1.Contact rating:	0.2A, 24VDC; 0.5A, 12VDC
1-2.Minimum contact rating:	1mA, 10mV
1-3.Contact resistance:	30m Max.
1-4.Dielectric strength:	2mA, 500VDC for 60sec.
1-5.Capacitance:	1.5pF Max.
1-6.Insulation resistance:	10000M Min. under 500VDC
1-7.Mechanical life:	10000 operations

2. GENERAL CHARACTERISTICS

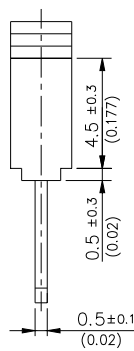
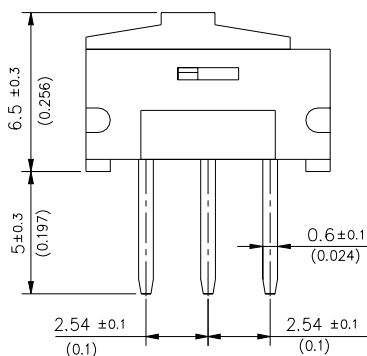
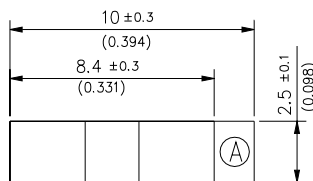
2-1.Operating temperature range:	-40 ~ +85
2-2.Solder temperature:	230 for 3 sec. (Standard version) 250 for 3 sec. (Tropical version)
2-3.Reflow soldering heat for SMT type (reference only)	210 for 20 seconds or less, peak temperature 230 or less
2-4.Vibration:	normal operation at 10Hz to 60Hz, 1.5mm movement
2-5.Salt spray:	35 , 5% for 24hours

PART NUMBERING SYSTEM

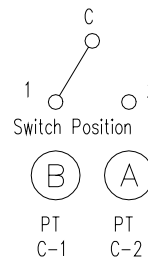


DIMENSIONS AND CIRCUITRY

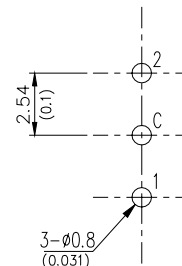
DIMENSIONS Unit: mm(inch)
 P/N.: ESP10XX



CIRCUIT DIAGRAM



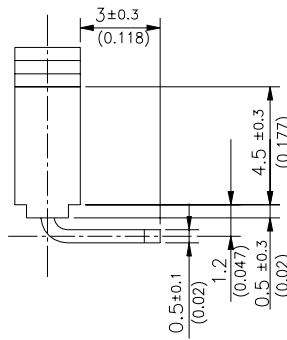
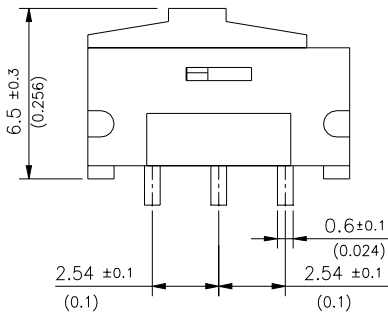
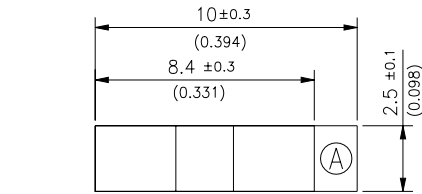
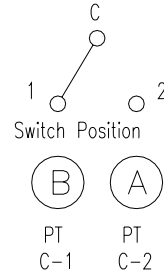
P.C.B. LAY OUT



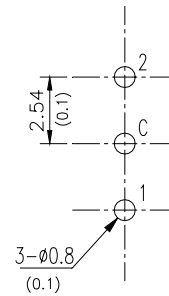
DIMENSIONS
P/N.: ESP20XX

Unit: mm(inch)

CIRCUIT DIAGRAM



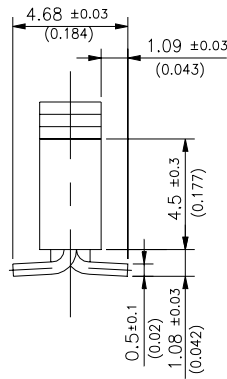
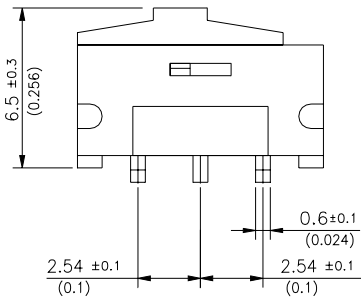
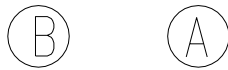
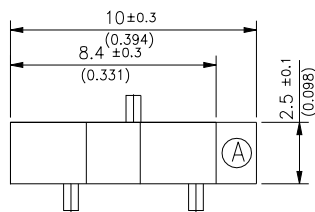
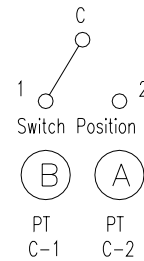
P.C.B. LAY OUT



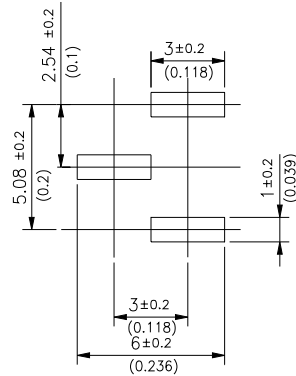
DIMENSIONS
P/N.: ESP30XX

Unit: mm(inch)

CIRCUIT DIAGRAM

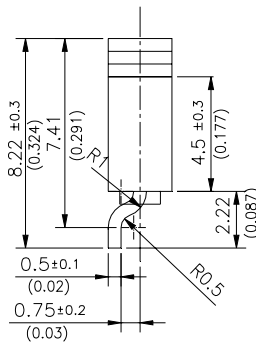
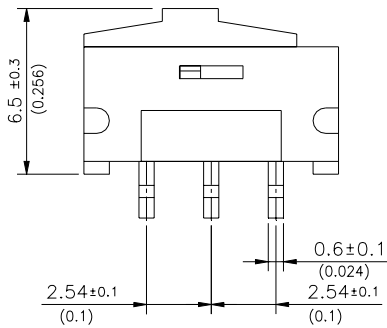
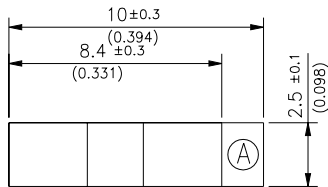


P.C.B. LAY OUT

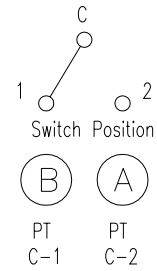


DIMENSIONS Unit: mm(inch)

P/N.: ESP40XX



CIRCUIT DIAGRAM



P.C.B. LAY OUT

