



# SERIES 327

## Header Terminal Blocks For PC-Boards

Spacing 5mm or 10mm  
Straight Pin Height Over PC-Board 12.1mm  
Right Angle Pin Height Over PC-Board 7.8mm

Mates with Series 323, 325, 326

## Technical Data

### Material

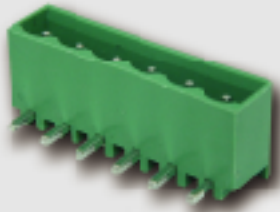
- Contact: Brass (Cu Zn)  
(metal housing) Cu/Ni, tin plated
- Terminal screw: Steel galvanized and chromated
- Surface of solder tail: Tin plated
- Insulator body: Polyamide, PA66 (UL 94 V-0)

### Electrical

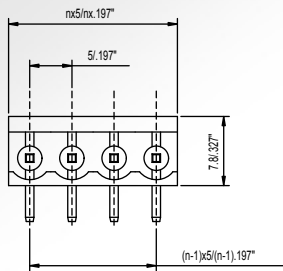
- Current rating: 15 Amp
- Resistance to tracking: 5M  $\Omega$
- Dielectric strength: 2500V
- Insulation withstands voltage: AC 1500V/Min
- Rated voltage: 300V

### Mechanical

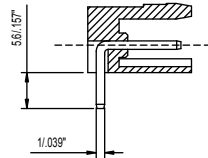
- Operating temperature: -40°C to + 105°C
- Short time peak temperature: +200°C max
- Fixing Hole: 1.3mm



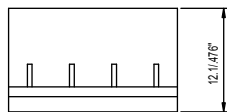
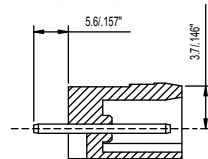
327-061-64



Straight Pin



Right Angle Pin



Recommended P.C.B. Holes diameter :  $\phi$ 1.2mm to  $\phi$ 1.4mm  
n= number of contacts

\*\* To avoid accumulated tolerance-variations of Terminal-Blocks to PC-Board spacing, limit the number of contacts to not more than 24 contacts per row.



327-061-24



327-061-64

## HOW TO ORDER :

3	2	7	—	X	X	X	—	X	X
Series No.				No. of Pole		Pitch		Color	
						1 5mm		1 Grey	
						2 10mm		2 Blue	
								3 Black	
								4 Green	