



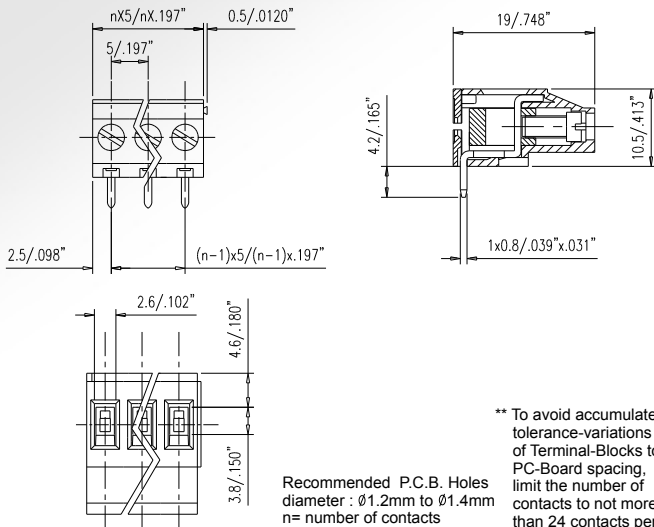
SERIES 371

Terminal Blocks For PC-Boards Machined Type Insert

Top Wire Inlet Type - Screw On Front
Spacing 5mm or 10mm
Height Over PC-Board 10.5mm



371-031-12



Technical Data

Material

- Contact: Brass (Cu Zn)
- (metal housing) Cu/Ni, tin plated
- Terminal screw: Steel galvanized and chromated Cu Sn 6
- Wire guard: Tin plated
- Surface of solder tail: Poly Butylene Terephthlene, PBT (30%Glass filled) (UL 94 V-0)
- Insulator body (housing)

Electrical

- Current rating: 20 Amp
- Resistance to tracking: $5\text{M } \Omega$
- Dielectric strength: 2500V
- Insulation withstands voltage: AC 1500V/Min
- Rated voltage: 300V
- Rated cross section: 2.5mm^2
- Conductor Size: $0.5 - 4\text{mm}^2$
- AWG: 22 - 14
- Stripping length: 7.5 - 8mm

Mechanical

- Operating temperature: -30°C to $+120^\circ\text{C}$
- Short time peak temperature: $+200^\circ\text{C}$ max

HOW TO ORDER :

Series No. 371 — No. of Pole XX — Pitch X — Color 1 X

1	5mm
2	10mm

1	Grey
2	Blue
3	Black
4	Green