



ATTENTION
OBSERVE PRECAUTIONS
FOR HANDLING
ELECTROSTATIC
DISCHARGE
SENSITIVE
DEVICES

515LG1C

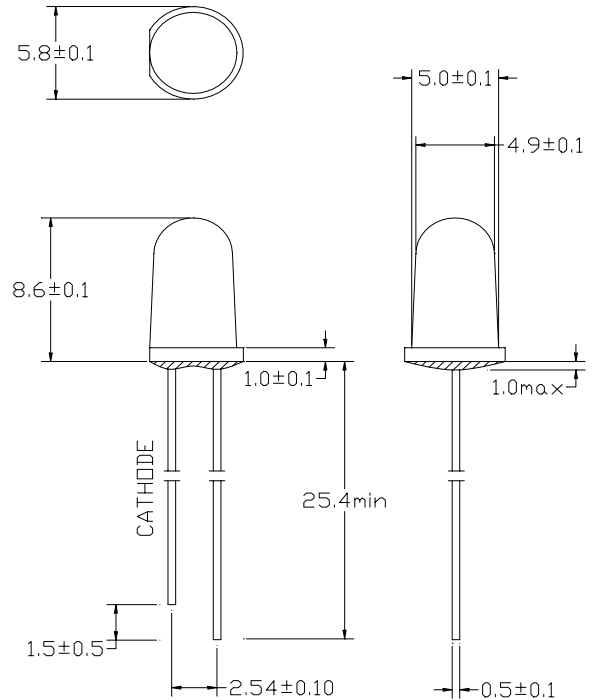
➤ Features:

- Single color
- High bright output
- Low power consumption
- High reliability and long life

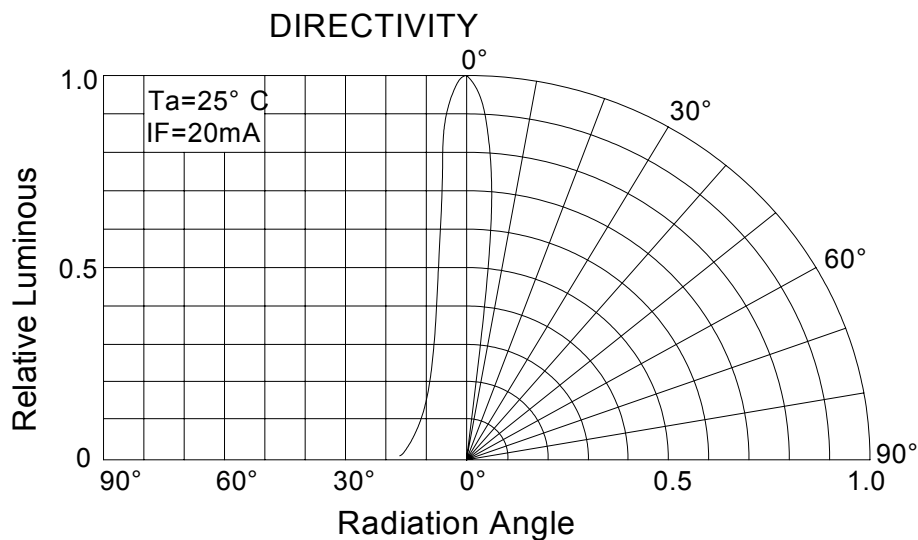
➤ Descriptions:

- Dice material: InGaN
- Emitting Color: Super Bright Blue Green
- Device Outline: ϕ 5mm Round Type
- Lens Type: Water Clear

➤ Directivity:



1. All dimensions are millimeters
2. Tolerance is ± 0.25 mm unless otherwise noted.





LED SPECIFICATION

515LG1C

➤ Absolute maximum ratings (Ta = 25°C)

Parameter	Symbol	Test Condition	Values		Unit
			Min.	Max.	
Reverse Voltage	V _R	I _R = 30 μA	5	--	V
Forward Current	I _F	----	----	30	mA
Power Dissipation	P _d	----	----	105	mW
Pulse Current	I _{peak}	Duty=0.1mS, 1kHz	----	100	mA
Operating Temperature	T _{opr}	----	-20	+85	°C
Storage Temperature	T _{str}	----	-25	+100	°C

➤ Electrical and optical characteristics (Ta = 25°C)

Parameter	Symbol	Test Condition	Values			Unit
			Min.	Typ.	Max.	
Forward Voltage	V _F	I _F =20mA	----	3.2	3.6	V
Reverse Current	I _R	V _R =5V	----	----	30	μA
Dominate Wavelength	λ _d	I _F =20mA		BIN	----	nm
Peak Wavelength	λ _p	I _F =20mA		BIN	----	nm
Spectral Line half-width	Δλ	I _F =20mA	----	35	----	nm
Luminous Intensity	I _v	I _F =20mA		BIN	----	mcd
Viewing Angle	2θ _{1/2}	I _F =20mA	13	15	17	deg.

➤ Luminous Intensity Bins (Ta = 25°C)

Unit:mcd

Bin	T	U	V
Min	4180	5860	8200
Max	5860	8200	12000

➤ Dominate Wavelength Bins

Unit:nm

Bin	G4	G5	G6	G7
Min	500	503	506	509
Max	503	506	509	512



LED SPECIFICATION

515LG1C

➤ Typical electrical/optical characteristic curves:

