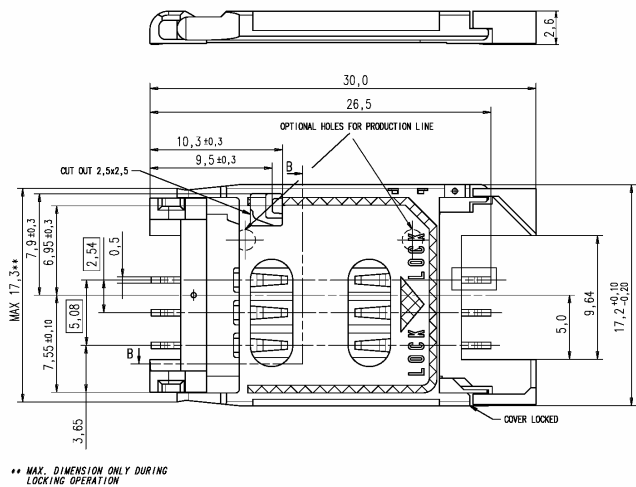
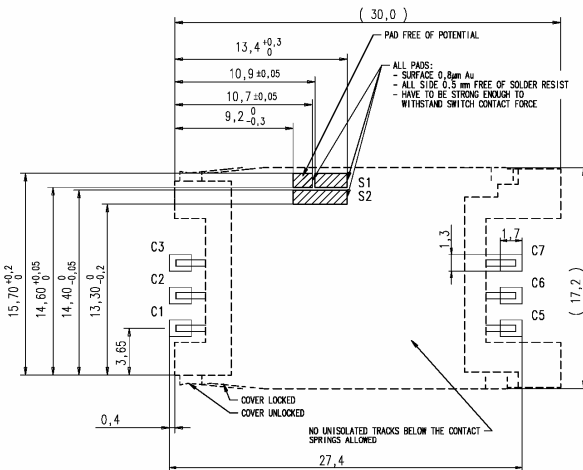
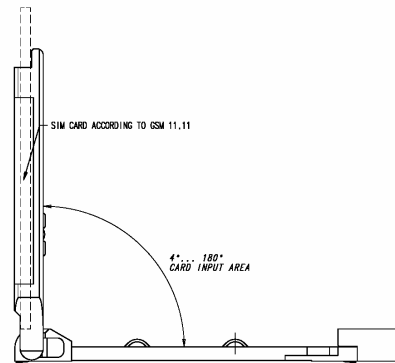
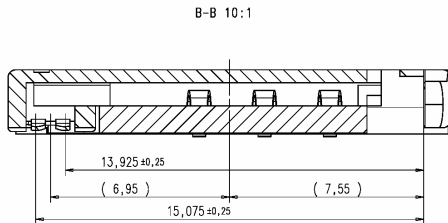


Part Number: C70710M0065222

SIMLOCK® With Integrated Cover And Switch

- Small overall dimension
- With card and locking detection switch
- Secure card position
- Reliable contact of SIM-Card pads
- Easy and safe locking
- Used by major phone manufacturers

1. Material:
Pin: Copper alloy
Insulator: High temperature thermoplastic
2. Plating:
Contact area: 0.8 µm Au at mating area
Solder area: 4 µm Sn at solder tail
Under layer: 2 µm Ni under plated
3. Electrical specifications:
Contact resistance: 100 mOhm max
Voltage rating (SELV): 15 Vdc max
Current rating: 1 A
Dielectric strength: 500 Vrms min, 1 min
Insulation resistance: 10E9 Ohm min
4. Climatic characteristics:
Operation temperature: -25°C to +70°C (depending on Sim Card material)
5. Mechanical specifications:
Contact force, nominal: 30-70 cN
Mechanical lifetime: 1,500 mating cycles min
Contact position acc. to GSM
6. Packaging (acc. EIA 481):
Type: tape & reel, Quantity/packaging unit: 800 pcs, 20 mm pitch



for details see customer drawing / subject to modifications