

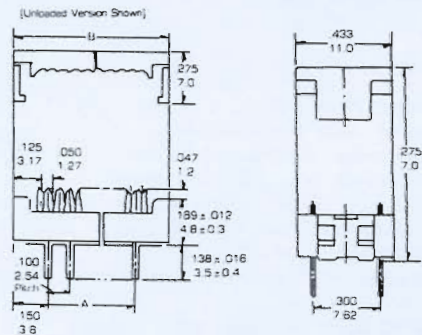
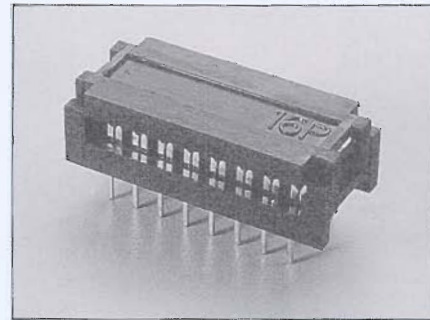
# .100" × .300" (2.54mm × 7.62mm) DIP Plug Connectors

## Features:

- 14-20 Circuits
- PBT + 30% Glass Fiber (UL 94V-0)
- Ideal for board-to-board application
- Compatible with standard Dip socket on 0.10" × 0.30" (2.54mm × 7.62mm)
- Ribbed base aids cable positioning
- Heavy duty contacts with extra strength
- Choice of plating options
- Quick termination

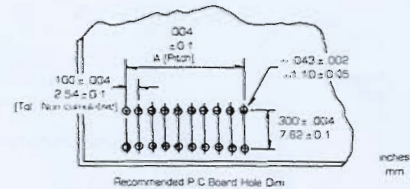
## Specifications:

- Current rating: 3A AC, DC
- Voltage rating: 250V AC, Maximum
- Temperature range: -40°C ~ + 105°C
- Contact resistance: Initial Value/10mΩ max.  
After environmental testing/15mΩ max.
- Insulation resistance: 1,000 MΩ min
- Withstand Voltage: 500V AC/minute
- Applicable wires: AWG #28, 7 strands .050" (1.27mm) pitch flat cable
- Applicable PC board thickness: .063" (1.6mm)

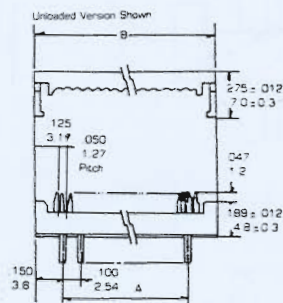


## Dimensional Information PCI Series

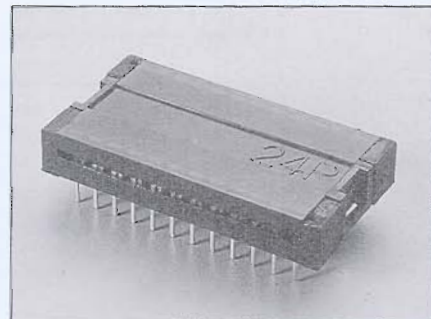
Circuits	Dim. A ±0.08 0.20	Dim. B ±.008 0.20	Circuits	Dim. A ±0.08 0.20	Dim. B ±.008 0.20
PCI-14	.600 15.24	.899 22.84	PCI-18	.800 20.32	1.099 27.92
PCI-16	.700 17.78	.999 25.38	PCI-20	.900 22.86	1.199 30.46



# .100" × .600" (2.54mm × 15.24mm)



Inches  
mm



## Dimensional Information PCI Series

Circuits	Dim. A ±.008 0.20	Dim. B ±.008 0.20
PCI-24	1.100 27.94	1.399 35.54
PCI-28	1.300 33.02	1.599 40.62
PCI-32	1.500 38.10	1.799 45.70
PCI-36	1.700 43.18	1.999 50.78
PCI-40	1.900 48.26	2.199 55.86
PCI-42	2.00 50.80	2.299 58.40

