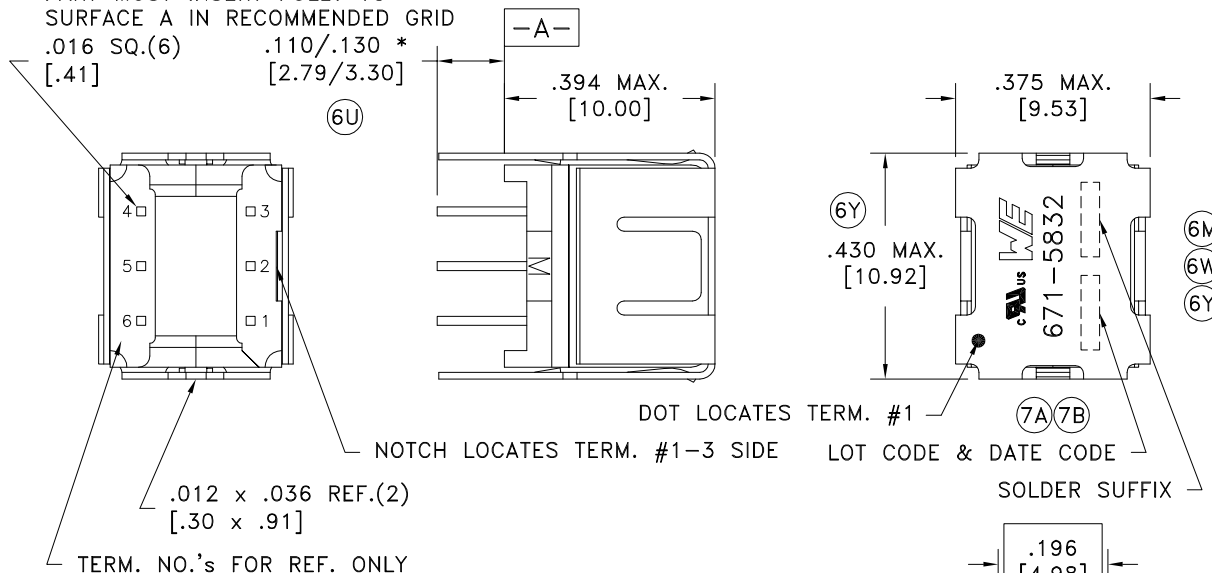


|               |                   |      |               |          |
|---------------|-------------------|------|---------------|----------|
| SOLDER SUFFIX | CUSTOMER TERMINAL | RoHS | LEAD(Pb)-FREE | (7A)(7B) |
| LF1           | Sn96%, Ag4%       | Yes  | Yes           |          |

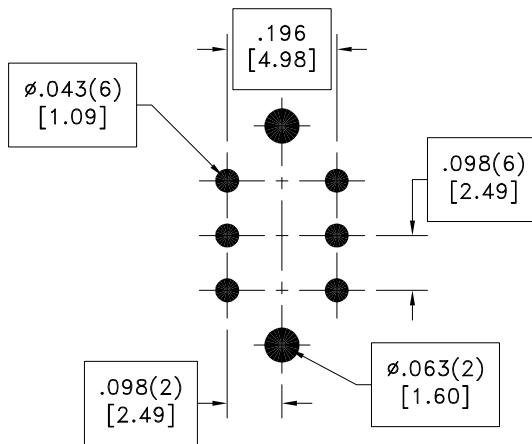
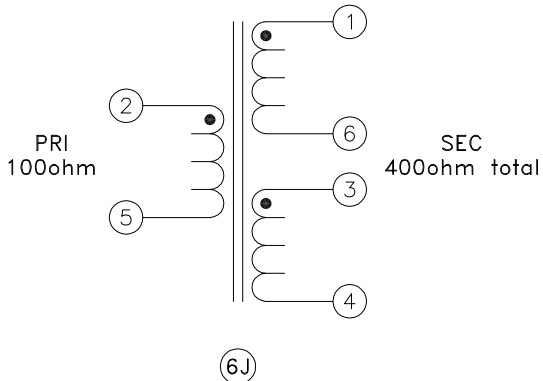
PART MUST INSERT FULLY TO SURFACE A IN RECOMMENDED GRID  
 .016 SQ.(6) .110/.130 \*  
 [.41] [2.79/3.30]

\* DIMENSION MAY BE EXCEEDED WITH SOLDER ONLY



.012 x .036 REF.(2)  
 [.30 x .91]

TERM. NO.'s FOR REF. ONLY



(6Y) ELECTRICAL SPECIFICATIONS @ 25°C unless otherwise noted:

- \* LONGITUDINAL BALANCE: 35dB min., 1.544MHz.
- (6V) D.C. RESISTANCE (@20°C): 0.6 ohms max., 1-6; 2-5; 3-4.
- FREQUENCY RESPONSE: ±0.50dB, 100k - 4MHz, 772kHz ref.
- INSERTION LOSS: 0.075dB ±0.025dB at 772kHz (transmit).
- \* DIELECTRIC RATING: 1500VDC for 1 second between 1-2; 1-3; 2-3.
- INDUCTANCE: 600uH min., 10kHz, 500mVAC, 1-6, Ls.
- LEAKAGE INDUCTANCE: 0.75uH max., 10kHz, 10mAAC measured on any winding with all other windings shorted (Ls).
- RETURN LOSS: 15dB min. (20dB typ.), 100k - 4MHz, 100 ohm ref.
- URNS RATIO: (2-5):(1-6) = 1:1, ±1%.  
(2-5):(3-4) = 1:1, ±1%.
- INTERWINDING CAPACITANCE: 27pF max., 1kHz, 1VAC, between any two windings, Cs.
- OPERATING TEMPERATURE RANGE: -40°C to +85°C.

\* To meet or exceed FCC Part 68 requirements.

(7B) Wire insulation & RoHS status not affected by wire color.  
 Wire insulation color may vary depending on availability.

|                        |         |
|------------------------|---------|
| (6Q)(7B) AGENCY NUMBER |         |
| (7B) UL                | E205930 |

DETAILS SUBJECT TO CHANGE

Unless otherwise specified:  
 Tolerances:  
 Angles: ±1°  
 Fractions: ±1/64  
 Decimals: ±.005[.13]

DRAWING TITLE

**TRANSFORMER**

eiSos p/n: 7500715832

SEE REVISION SHEET FOR REVISION LEVEL



PART NO.

**671-5832-LF1**

(7B)(7A) REV.

7B  
 9/14

SPECIFICATION SHEET 1 OF 1

PART# 671-5832-LF1