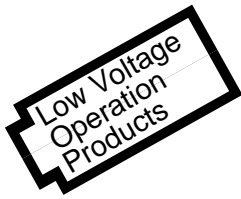


SVM7860C Series

Melody IC



- 2 Sound Sources
- One Melody
- 127 Words Melody ROM

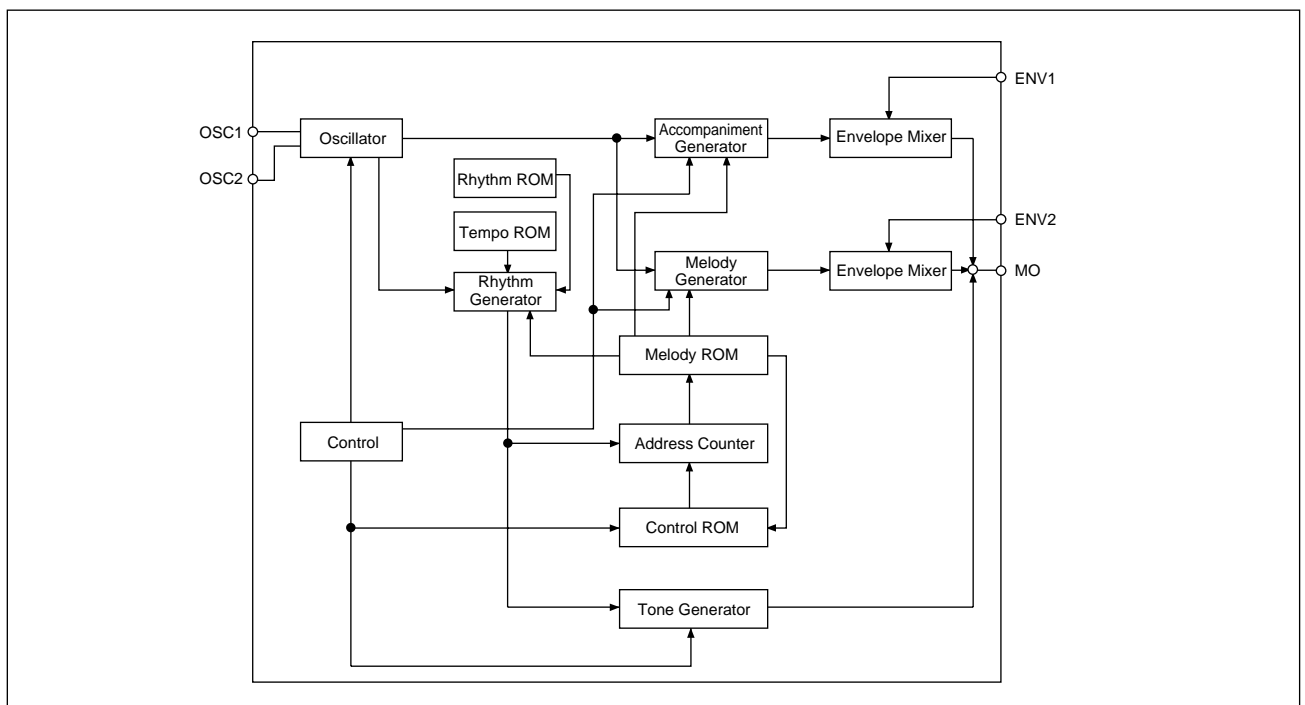
DESCRIPTION

The SVM7860C Series CMOS IC produce melodies or alarm tones from a preprogrammed ROM. The ROM has a capacity of 127 words and can store 1 melody from two sound sources with an envelope.

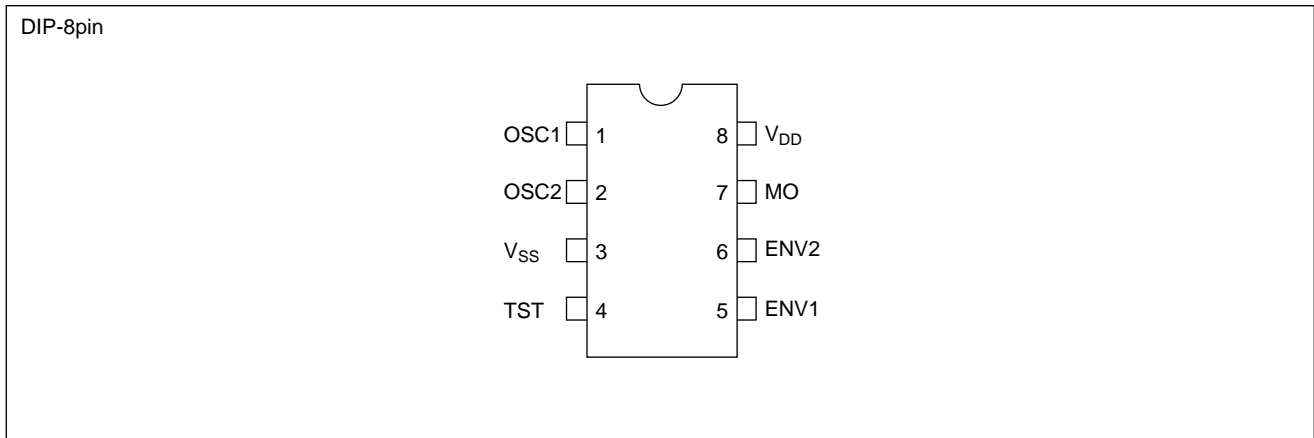
FEATURES

- Melody ROM capacity 127 words
- Melody 1
- Two sound sources with an envelope (CR envelope)
- DC triggered (power on/off) performance start mode
- Level hold performance
- 1.5/5.0V operating voltage (mask selected)
- Package DIP-8pin (plastic)

BLOCK DIAGRAM



■ PIN CONFIGURATION



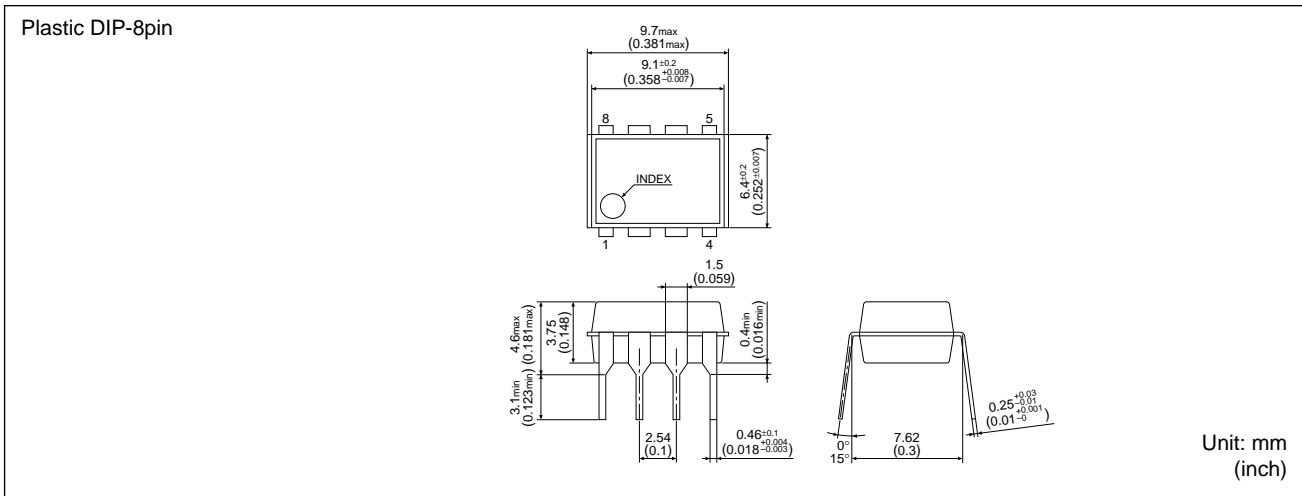
■ PIN DESCRIPTION

Pin name	Pin No.	Pull-down resistor	Function
OSC1	1	-	A resistor is connected between both terminals to form a ring oscillator, or external reference signals are applied to OSC1.
OSC2	2	-	
V _{SS}	3	-	Power supply terminal (0V)
TST	4	Provided	LSI test input
ENV1	5	-	Connects resistor and capacitor to add envelope to main melody.
ENV2	6	-	Connects resistor and capacitor to add envelope to accompaniment.
MO	7	-	Output terminal for acoustic signals.
V _{DD}	8	-	Power supply terminal (+)

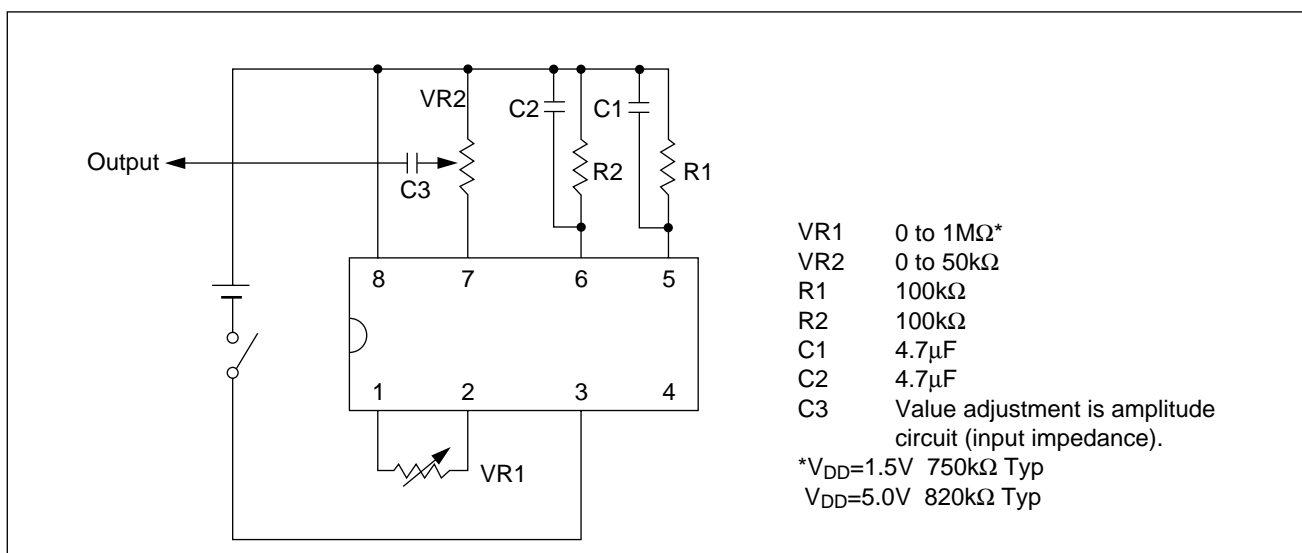
■ LINE UP

Model	Source oscillation
SVM7860C	CR oscillation
SVM7861C	External reference signal

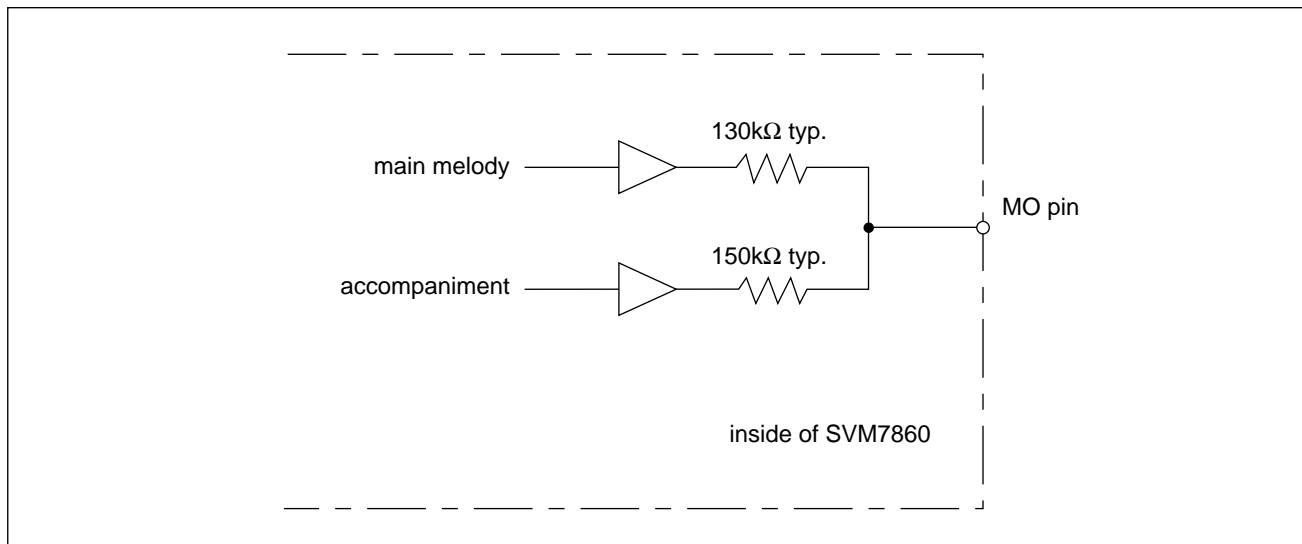
■ PACKAGE DIMENSIONS



■ BASIC EXTERNAL CONNECTION



■ MO OUTPUT PIN EQUIVALENT CIRCUIT



■ ABSOLUTE MAXIMUM RATINGS

(V_{SS} = 0V)

Rating	Symbol	Value	Unit
Supply voltage	V _{DD}	-0.3 to 7.0	V
Input voltage	V _I	-0.3 to V _{DD} +0.3	V
Output voltage	V _O	-0.3 to V _{DD} +0.3	V
Operating temperature	T _{opr}	-20 to 85 (V _{DD} ≥1.5V)	°C
Storage temperature	T _{stg}	-65 to 150	°C
Soldering temperature and time	T _{sol}	260°C, 10s (at lead)	-

■ ELECTRICAL CHARACTERISTICS

●V_{DD}=1.5V

(V_{SS} = 0V, Ta = 25°C)

Characteristic	Symbol	Condition	Min.	Typ.	Max.	Unit
Supply voltage	V _{DD}		1.2	1.5	2.0	V
High level input voltage	V _{IH}	TST	V _{DD} -0.3	-	V _{DD}	V
Low level input voltage	V _{IL}	TST	V _{SS}	-	V _{SS} +0.3	V
High level input current	I _{IH}	OSC1	-	-	0.05	μA
Low level input current	I _{IL}	OSC1	-	-	0.05	μA
Input amplitude	A _I	V _{DD} ≥1.5V, OSC1 input	$\left \frac{V_{DD}}{2} \right \pm 0.4$	-	-	V
Operating supply current	I _{DD0}		-	50	100	μA

●V_{DD}=5.0V

(V_{SS} = 0V, Ta = 25°C)

Characteristic	Symbol	Condition	Min.	Typ.	Max.	Unit
Supply voltage	V _{DD}		1.2	5.0	5.5	V
High level input voltage	V _{IH}	TST	V _{DD} -0.3	-	V _{DD}	V
Low level input voltage	V _{IL}	TST	V _{SS}	-	V _{SS} +0.3	V
High level input current	I _{IH}	OSC1	-	-	0.1	μA
Low level input current	I _{IL}	OSC1	-	-	0.1	μA
Input amplitude	A _I	V _{DD} ≥1.5V, OSC1 input	$\left \frac{V_{DD}}{2} \right \pm 0.4$	-	-	V
Operating supply current	I _{DD0}		-	1	2	mA

Note Don't touch the oscillation circuit with your hand while playing musical tunes.
The oscillation resistor (VR1) should be covered with resin or others.
The power supply off, when anything unusual should happen.

■ OSCILLATION CHARACTERISTICS(CR OSCILLATION)

●V_{DD}=1.5V

(V_{SS} = 0V, Ta = 25°C)

Characteristic	Symbol	Condition	Min.	Typ.	Max.	Unit
Oscillation frequency	f _{OSC}	V _{DD} =1.5V, VR=750kΩ	-	32.768	-	kHz
Oscillation self-excited voltage	V _{STA}	VR=750kΩ	1.2	-	-	V
Oscillation stop voltage	V _{STP}	VR=750kΩ	-	-	1.2	V

●V_{DD}=5.0V

(V_{SS} = 0V, Ta = 25°C)

Characteristic	Symbol	Condition	Min.	Typ.	Max.	Unit
Oscillation frequency	f _{OSC}	V _{DD} =5.0V, VR ₁ =820kΩ	-	32.768	-	kHz
Oscillation self-excited voltage	V _{STA}	VR ₁ =820kΩ	1.2	-	-	V
Oscillation stop voltage	V _{STP}	VR ₁ =820kΩ	-	-	1.2	V

NOTICE

No part of this material may be reproduced or duplicated in any form or by any means without the written permission of Seiko Epson. Seiko Epson reserves the right to make changes to this material without notice. Seiko Epson does not assume any liability of any kind arising out of any inaccuracies contained in this material or due to its application or use in any product or circuit and, further, there is no representation that this material is applicable to products requiring high level reliability, such as, medical products. Moreover, no license to any intellectual property rights is granted by implication or otherwise, and there is no representation or warranty that anything made in accordance with this material will be free from any patent or copyright infringement of a third party. This material or portions thereof may contain technology or the subject relating to strategic products under the control of the Foreign Exchange and Foreign Trade Control Law of Japan and may require an export license from the Ministry of International Trade and Industry or other approval from another government agency.

All product names mentioned herein are trademarks and/or registered trademarks of their respective companies.

©Seiko Epson Corporation 1998 All rights reserved.

SEIKO EPSON CORPORATION**ELECTRONIC DEVICES MARKETING DIVISION****Electronic Device Marketing Department
IC Marketing & Engineering Group**

421-8, Hino, Hino-shi, Tokyo 191-8501, JAPAN
Phone: +81-(0)42-587-5816 Fax: +81-(0)42-587-5624

ED International Marketing Department I (Europe & U.S.A.)

421-8, Hino, Hino-shi, Tokyo 191-8501, JAPAN
Phone: +81-(0)42-587-5812 Fax: +81-(0)42-587-5564

ED International Marketing Department II (Asia)

421-8, Hino, Hino-shi, Tokyo 191-8501, JAPAN
Phone: +81-(0)42-587-5814 Fax: +81-(0)42-587-5110

Electric Device Information of EPSON WWW server

<http://www.epson.co.jp>

