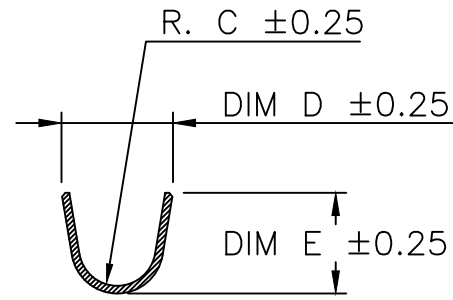


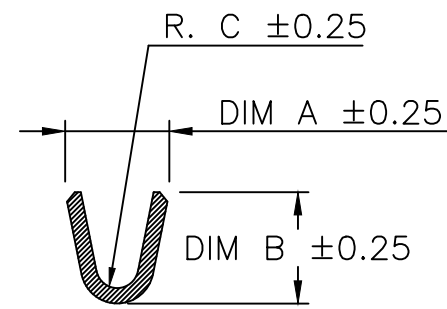
PRODUCT NUMBER
SEE SHEET 2

EXTENDED RANGE

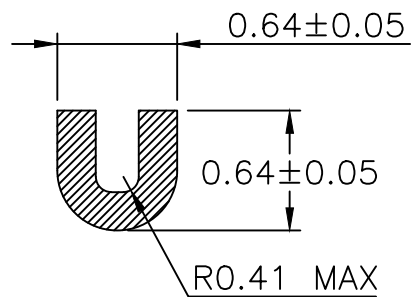
- TOOLING FEASIBILITY CONFIRMED
- SAMPLES ON DEMAND
- AVAILABILITY ON DEMAND



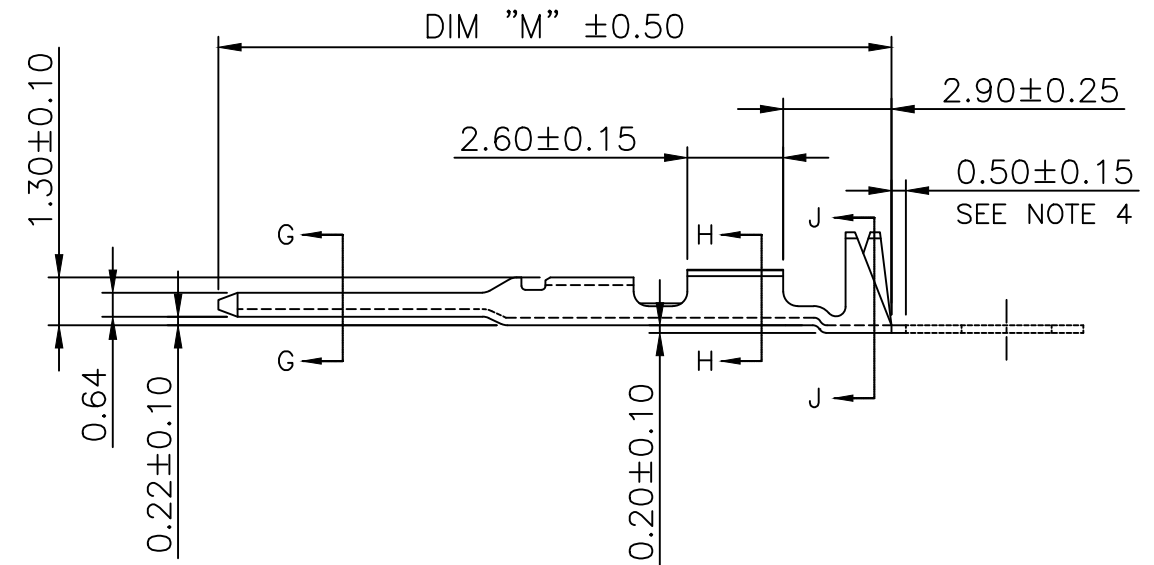
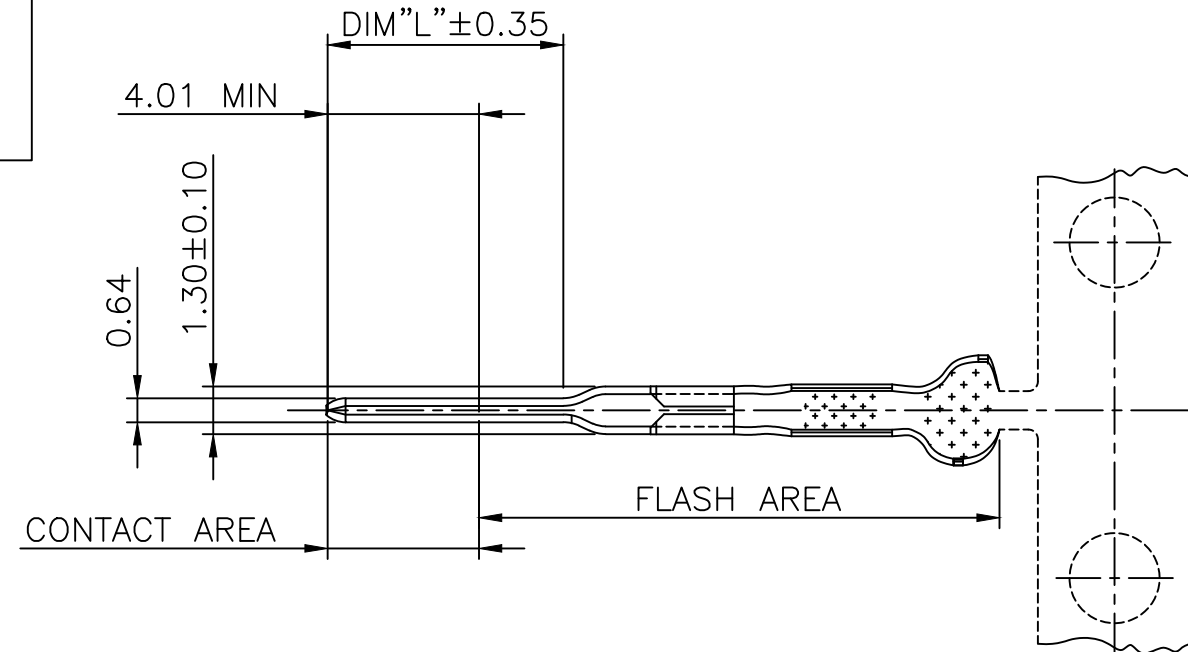
SECTION J-J
SCALE 8:1



SECTION H-H
SCALE 8:1



SECTION G-G
SCALE 5:1



mat'l. code SEE NOTES		surface ISO 1302	tolerance ISO 406 ISO 1101	projection mm	product family PV TERMINAL
ltr	ecn no	dr	date	tolerances unless otherwise specified	title CTW MALE PIN
T	V09-0453	HTB	2009.10.15	angles linear .x ±0.3	dwg no 75967
U	F-25828	DDE	2017.01.03	.xx ±0.13	
V	F-53220	DDE	2024.10.16	0±2' .xxx ±0.05	sheet 1 of 2
W	F-54571	DDE	2025.02.10	dr S.ROYER 94.12.19	size A3
X	F-56602	LMU	25.07.21	enr T.HANNA 94.12.19	type CUSTOMER Drawing
				chr T.HANNA 94.12.19	
S	V08-0114	HTB	2008.04.01	appd T.HANNA 94.12.19	
sheet	revision	X	X		
index	sheet	1	2		

Amphenol
FCI
FCIconnect.com

Copyright FCI

PRODUCT NUMBER
75967-XYZLF

LEAD-FREE RoHS COMPATIBLE,
SEE NOTE 6

VARIATION
(AS AVAILABLE)

PLATING, SEE PLATING TABLE
(AS AVAILABLE)

PACKAGING, SEE PACKAGING TABLE
(AS AVAILABLE)

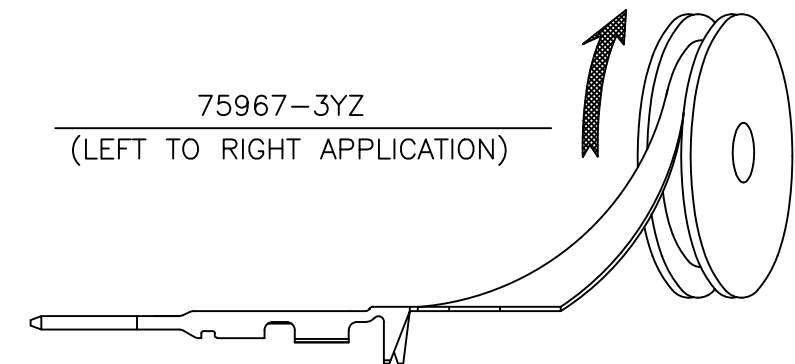
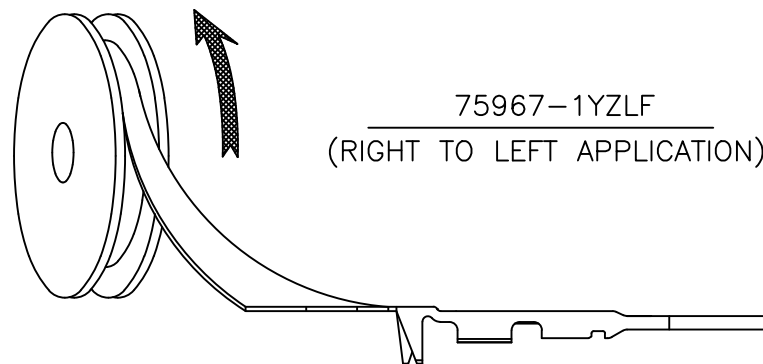
PRODUCT NUMBER	AWG	WIRE BARREL			INSULATION BARREL			DIM "L"	DIM "M"
		DIM "A"	DIM "B"	DIM "C"	DIM "D"	DIM "E"	DIM "F"		
75967-XY1LF	28-32	1.37	1.47	0.28	2.92	2.67	1.02	6.42	17.70
75967-XY2LF	22-26	1.78	1.65	0.43	3.53	3.05	1.27	6.42	17.70
75967-XY3LF	18-20	2.64	2.64	0.53	3.53	3.05	1.27	6.42	17.70

PLATING CODE	PLATING
75967-X1ZLF	0.76µm Au IN CONTACT AREA; REMAINDER 0.076µm Au FLASH OVER 1.27µm Ni
75967-X2ZLF	0.38µm Au IN CONTACT AREA; REMAINDER 0.076µm Au FLASH OVER 1.27µm Ni
75967-X3ZLF	1.27µm Au IN CONTACT AREA; REMAINDER 0.076µm Au FLASH OVER 1.27µm Ni
75967-X6ZLF	PRE-PLATED 2.54µm TO 4.06µm Sn (SEE NOTE 8)
75967-X9ZLF	1.27µm Au IN CONTACT AREA; REMAINDER 0.76µm Au OVER 1.27µm Ni

PACKAGING CODE	FINAL REELING	QUANTITY	APPLICATION INFORMATION
75967-1YZLF	RIGHT TO LEFT	8000 PER REEL	APPLICATOR R. TO L. FEEDING
75967-3YZLF	LEFT TO RIGHT	8000 PER REEL	APPLICATOR L. TO R. FEEDING

NOTES:

- 1 - APPLICABLE SPECIFICATIONS
BUS-12-098 PRODUCT SPECIFICATION
- 2 - FOR PLATING SPECIFICATIONS SEE SHEET 2
- 3 - FOR APPLICATION WITH MINI-LATCH HOUSING SEE TA-211
- ④ - CUT-OFF DIMENSION FOR LOOSE PIECE VERSIONS
- ⑤ - MATERIAL: BRASS ASTM B36 ALLOY C26000-H03
- ⑥ - PRODUCT MEETS EUROPEAN UNION DIRECTIVES AND
OTHER COUNTRY REGULATIONS AS DESCRIBED IN
GS-22-008.
- 7 - THIS PRODUCT IS NOT INTENDED TO BE EXPOSED
TO MANUFACTURING SOLDER PROCESSES.
- ⑧ - THIS PRODUCT HAS 100% TIN PLATING IN THE INTERFACE
AND HAS NOT BEEN TESTED FOR WHISKER GROWTH IN
ALL INTERCONNECT ENVIRONMENTS.
- 9 - THIS PART SERIES IS NOT INITIALLY INTENDED FOR
AUTOMOTIVE APPLICATIONS. ADDITIONAL FEES ARE
CHARGEABLE FOR ANY ADDITIONAL QUALIFICATION AND
TEST REPORTS PERFORMED OUTSIDE THE SCOPE OF THE
STANDARD PRODUCT SPECIFICATIONS.
- 10- UNLESS OTHERWISE APPROVED BY AMPHENOL, ALL PARTS
AND COMPONENTS ARE DESIGNED & BUILT ACCORDING TO
AMPHENOL'S SPECIFICATIONS WHICH ARE SUBJECT TO
CHANGE WITHOUT NOTICE.



mat'l. code		surface		tolerance		projection		product family		
SEE NOTES		ISO 1302		ISO 406 ISO 1101		mm		PV TERMINAL		
ltr	ecn no	dr	date	tolerances unless otherwise specified		mm		title		
T	V09-0453	HTB	2009.10.15	angles	linear	mm		CTW MALE PIN		
U	F-25828	DDE	2017.01.03	0±2'		scale 3:1				
V	F-53220	DDE	2024.10.16							
W	F-54571	DDE	2025.02.10	dr	S.ROYER	94.12.19	dwg no		sheet 2 of 2	size
X	F-56602	LMU	25.07.21	enr	T.HANNA	94.12.19	75967		A3	
				chr	T.HANNA	94.12.19	type		CUSTOMER	Drawing
				appd	T.HANNA	94.12.19				
sheet index	revision sheet									