






# PA366 - 5

**Screw connection with wire protector terminal block**

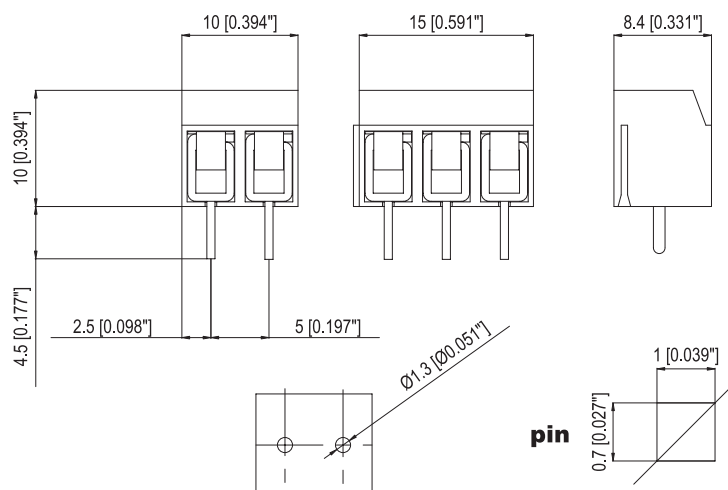


## TECHNICAL DATA

	IEC	UL / CSA
<b>Pitch</b>	5 mm	0.19"
<b>Poles</b>	2, 3	
<b>Versions</b>	VE vertical	
<b>Ratings</b>	250V - 22A	300V - 10A
<b>Wire size</b>	2.5 sqmm	22 ÷ 16 AWG
<b>Working Temperature</b>	-5 ÷ 125 °C (short time 155 °C)	23 ÷ 221 °F
<b>Plastic Material</b>	Green Glass Filled Polyamide PA6.6, UL94-V0, CTI400V, GWT960 °C	
<b>Metal Parts</b>	Soldering pin and cage insert made in tin plated brass; Wire protector made in stainless steel; M2.5 Screw made in zinc plated steel	
<b>Screw Torque</b>	0.4 Nm	2.5 lb-in
<b>Accessories</b>		

Approvals	File Nr.	Ratings (sqmm/AWG - V - A - T)	Standard References
	EN544	2.5sqmm - 250V - 22A - 125 °C	EN60998-1; EN60998-2-1
	113188 ÜG	1.5sqmm - 250V - 17.5A - 125 °C	DIN EN60998-1; DIN EN60998-2-1 (VDE 0613)
	E76048 vol. 1 sec. 12	22 ÷ 16AWG - 300V - 10A - 105 °C	UL1059; CSA C22-2 N.158-1987

DIMENSIONAL DRAWING





# PA366 – 5

## PACKAGING

Type	P-N	Pack
PA 366/2	00110902	300
PA 366/3	00110903	250

## PALLETS

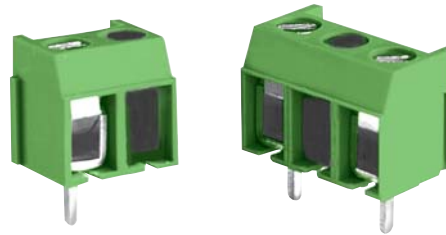
Europallets








# PA366 – 10

**Screw connection with wire protector terminal block**

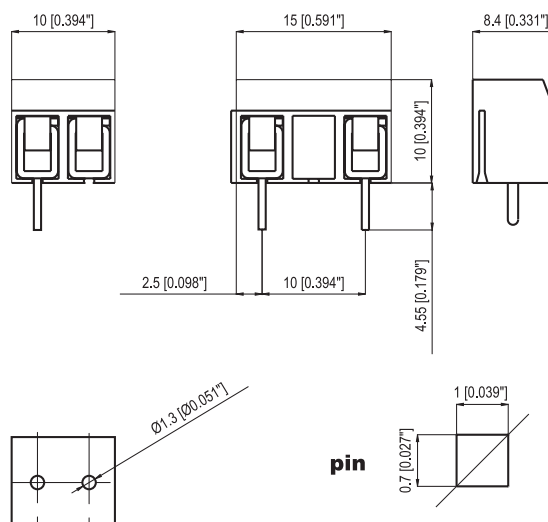


## TECHNICAL DATA

	IEC Standards	American Standards
<b>Pitch</b>	10 mm	0.39"
<b>Poles</b>	1, 2	
<b>Versions</b>	VE vertical	
<b>Ratings</b>	250V - 22A	300V - 10A
<b>Wire size</b>	2.5 sqmm	22 ÷ 16 AWG
<b>Working Temperature</b>	- 5 ÷ 125°C (short time 155°C)	23 ÷ 221°F
<b>Plastic Material</b>	Green Glass Filled Polyamide PA6.6, UL94 V0, CTI 400V, GWT 960°C	
<b>Metal Parts</b>	Soldering pin and cage insert made in tin plated brass; Wire protector made in stainless steel; M2.5 Screw made in zinc plated steel	
<b>Screw Torque</b>	0.4 Nm	2.5 lb-in
<b>Accessories</b>		

Approvals	File Nr.	Ratings (sqmm/AWG – V – A – T)	Standard References
	EN 544	2.5 sqmm - 250V - 22A - 125°C	EN 60998-1; EN 60998-2-1
	113188 ÜG	2.5 sqmm - 250V - 22A - 125°C	DIN EN 60998-1; DIN EN 60998-2-1 (VDE 0613)
	E76048 vol. 1 sec. 12	22 ÷ 16AWG - 300V - 10A - 105°C	UL 1059; CSA C22-2 N.158-1987

DIMENSIONAL DRAWING





# PA366 – 10

## PACKAGING

Type	P-N	Pack
PA 366/10/1	00110951	100
PA 366/10/2	00110952	250

## PALLETS

Europallets

