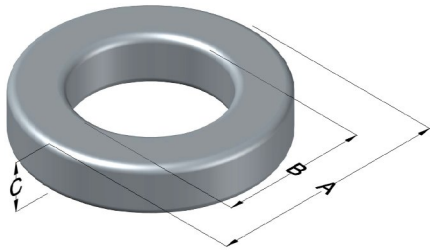




# C058439A2

110 Delta Drive  
 Pittsburgh, PA 15238  
 NAFTA Sales: (1)800-245-3984  
 HK Sales : (852)3102-9337  
 magnetics@spang.com  
 www.mag-inc.com



High Flux Permeability ( $\mu$ )	$A_L$ (nH/T <sup>2</sup> )	Core Marking			Coating Color
		Lot Number	Part Number	Inductance Grade	
60	135 $\pm$ 8%	XXXXXX	58439A2	X	Khaki

Dimensions	Uncoated		Coated Limits		Packaging
	(mm)	(in)	(mm)	(in)	
OD (A)	46.70	1.840	47.63	1.875	Cardboard cut-outs Box Qty= 105 pcs
ID (B)	24.1	0.950	23.3	0.918	
HT (C)	18.0	0.710	19.0	0.745	

Electrical Characteristics			Physical Characteristics						
Watt Loss @ 100 kHz, 100mT typical (mW/cm <sup>3</sup> )	DC Bias typical (A-T/cm)		Voltage Breakdown wire to wire min (V <sub>AC</sub> )	Break Strength min (kg)	Window Area W <sub>A</sub> (mm <sup>2</sup> )	Cross Section A <sub>e</sub> (mm <sup>2</sup> )	Path Length L <sub>e</sub> (mm)	Volume V <sub>e</sub> (mm <sup>3</sup> )	Weight (g)
	80%	50%							
1300	69.2	131	1000	113	427	199	107	21,300	160

Winding Information					Temperature Rating	
Winding Length Per Turn				Wound Coil Dimensions (mm)		Curie Temp: 500°C
Winding Factor	(mm)	Winding Factor	(mm)	Maximum OD (70%)	63.8	Coating Temp (Continuous up to): 200°C
				Maximum HT (70%)	38.7	
0%	62.1	40%	74.1	Surface Area (mm <sup>2</sup> )		Notes:
20%	68.2	45%	76.0	Unwound Core		
25%	69.7	50%	77.6	40% Winding Factor		
30%	70.9	60%	81.2			
35%	72.7	70%	85.4			

## Typical DC Bias Performance

