

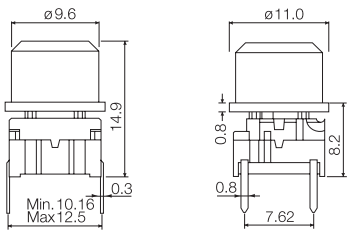
Technical Data

- through-hole or SMD
- 50mA/24VDC
- single pole/momentary
- 10.000.000 operations life time
- IP67 sealing
- temperature range:
 - low temp: -40/+115°C
 - high temp: -40/+160°C

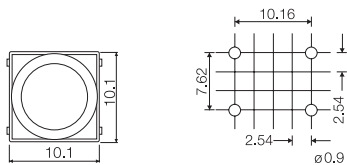


Keycaps shown on this page can also be used on **illumec™ switch 4F**

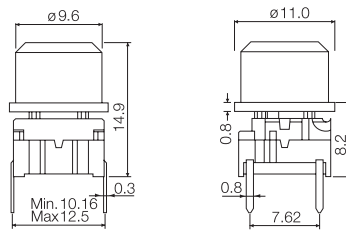
Dimensions (through-hole) 3F



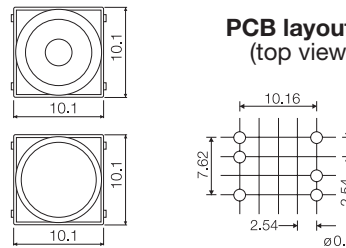
PCB layout



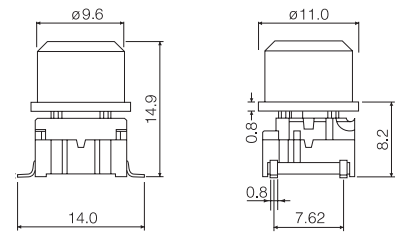
Dimensions (w/LED) 3F



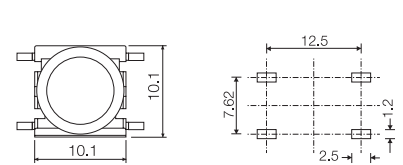
PCB layout (top view)



Dimensions (SMD) 3F



PCB layout



How to order

3 F

Switch

T

Mounting

T through-hole
S surface mount

L

L 6 low temp.
H 9 high temp.

1 D

Cap



00

00 blue
02 green
03 grey
04 yellow
06 white
08 red
09 black

30 ultra blue
40 dusty blue
42 aqua blue
32 mint green
33 tele grey
34 melon
38 noble red

50 metal dark blue
53 metal light grey
57 metal dark grey
58 metal bordeaux

Keycaps shown on this page can also be used on **illumec™ switch 4F**

3 F

Switch

T

Mounting

T through-hole

L

L 6 low temp.
H 9 high temp.

LED

00 blue
20 green
40 yellow
60 white
80 red
2040 green/yellow
8020 red/green
8040 red/yellow

+

Cap 1D



Cap 1E



Cap 1F



11

11 transparent
16 frosted white

Lens

00 blue
02 green
03 grey
04 yellow
06 white
08 red
09 black

1 transparent
2 green
4 yellow
6 frosted white
8 red

Ordering example: 3FTL620 + 1E032

For updates of products and/or changes of specifications please see www.mec.dk