

SPECIFICATION

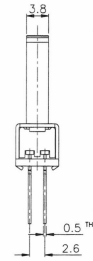
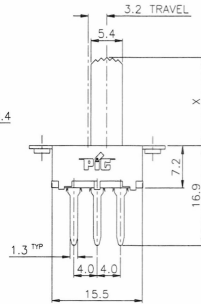
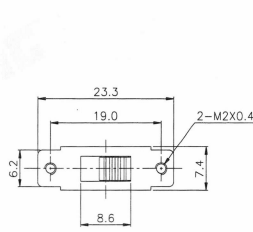
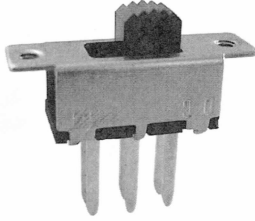


Rating: DC 50V 0.5A
Initial Contact Resistance: Not more than 30mΩ
Insulation Resistance: 500MΩ at 500V DC
Withstand Voltage: AC 500V for 1 Min
Mechanical Life: 100,000 Cycles (15~18 C/Min)
Electrical Life: 10,000 Cycles (6~10 C/Min)
Optional Knob Style: G or T or M

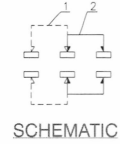


SLIDE SWITCH

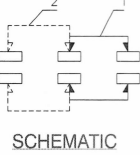
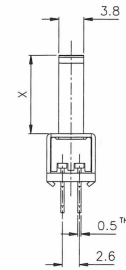
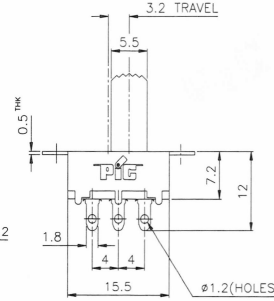
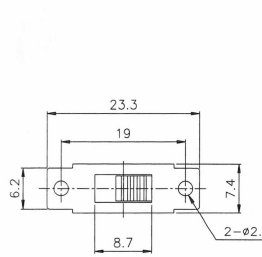
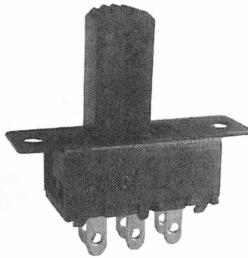
PIC SS-22F30



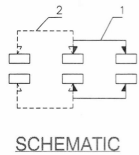
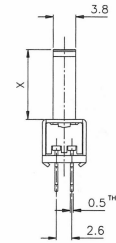
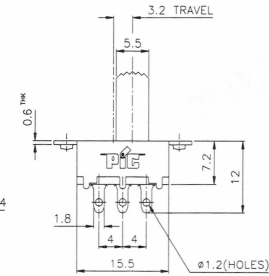
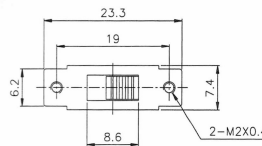
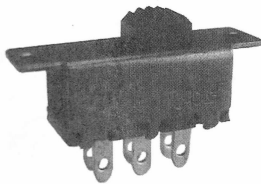
PCB LAYOUT



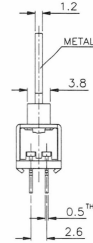
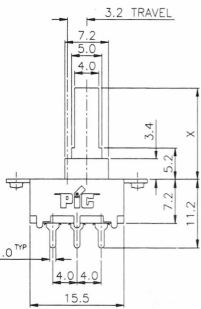
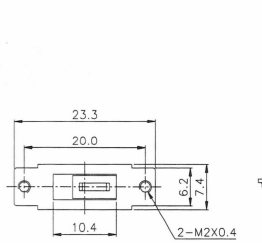
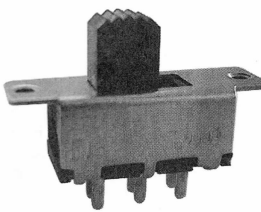
PIC SS-22F32



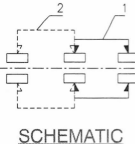
PIC SS-22F33



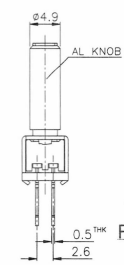
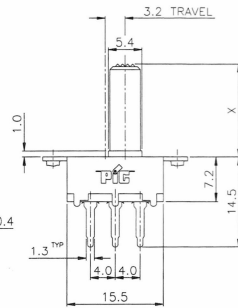
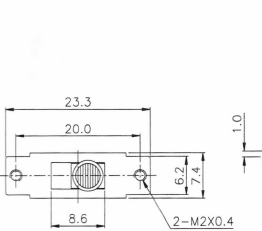
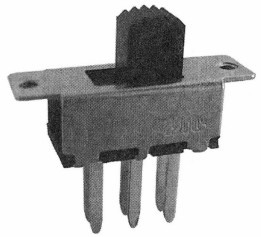
PIC SS-22F34



PCB LAYOUT



PIC SS-22F35



PCB LAYOUT

