



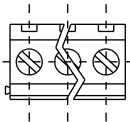
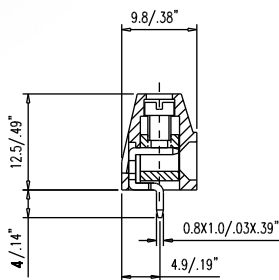
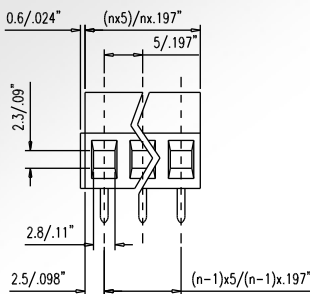
SERIES 375



375-031-14

Terminal Blocks For PC-Boards Machined Type Insert

Front Wire Inlet Type - Screw On Top
Spacing 5mm or 10mm
Height Over PC-Board 12.5mm



Recommended P.C.B. Holes
diameter : Ø1.2mm to Ø1.4mm
n= number of contacts

** To avoid accumulated tolerance-variations of Terminal-Blocks to PC-Board spacing, limit the number of contacts to not more than 24 contacts per row.



375-031-14



Technical Data

Material

- Contact: Brass (Cu Zn)
(metal housing) Cu/Ni, tin plated
- Terminal screw: Steel galvanized and chromated
Cu Sn 6
- Wire guard: Tin plated
- Surface of solder tail: Poly Butylene Terephthlene, PBT (30%Glass filled) (UL 94 V-0)
- Insulator body: (housing)

Electrical

- Current rating: 20 Amp
- Resistance to tracking: 5M Ω
- Dielectric strength: 2500V
- Insulation withstands voltage: AC 1500V/Min
- Rated voltage: 300V
- Conductor Size: 0.5 to 2.5mm²
- AWG: 22 - 14
- Stripping Length: 6.5 - 7mm

Mechanical

- Operating temperature: -30°C to + 120°C
- Short time peak temperature: +200°C max

HOW TO ORDER :

3 7 5 — X X X — 1 X

Series No. No. of Pole Pitch Color

1	5mm	1	Grey
2	10mm	2	Blue
3		3	Black
4		4	Green