

.100" (2.54mm) Center Wafer Assembly

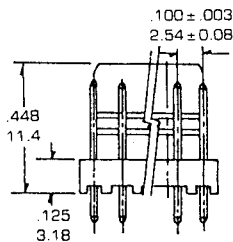
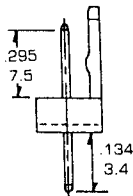
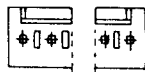
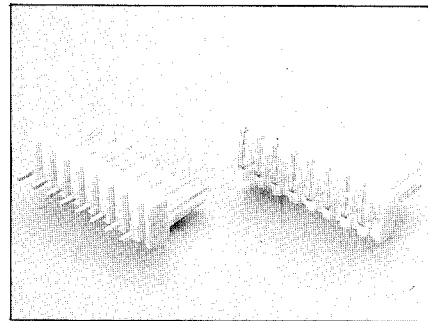
WF Series

Features:

- 2-25 Circuits
- Friction lock
- Nylon (UL 94V-0)
- .025" (0.64) right angle or straight square wire pins
- Mates with 2510 Housing

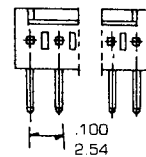
Specifications:

- Current rating: 3A AC, DC
- Voltage rating: 250V AC, Maximum
- Temperature range: -25°C ~ +90°C
- Contact resistance: Initial Value/10mΩ max.
After environmental testing/20mΩ max.
- Insulation resistance: 1,000 MΩ min
- Withstand Voltage: 1500V AC/minute
- Applicable PC board thickness: .063" (1.6mm)

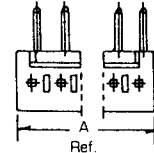


Straight pins

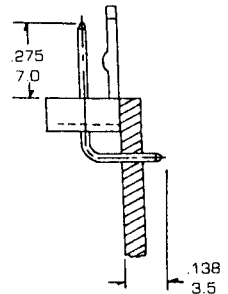
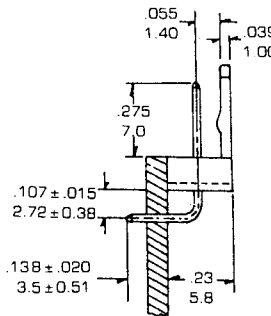
Right Angle Pins (A)



Right Angle Pins (B)



inches
mm



.100 ± .002 Typ.
[2.54 ± 0.005] Non-Accum.

.047 ± .002 Typ.
[1.10 ± 0.05] Dia. Holes

Recommended P.C. Board Hole
Layout for .100" (2.54mm) Wafers Waters

Dimensional Information WF Series

Circuits	Dim. A	Circuits	Dim. A	Circuits	Dim. A	Circuits	Dim. A	Circuits	Dim. A
WF-2: S R	.200 ± .004 5.08 ± 0.10	WF-7: S R	.700 ± .005 17.78 ± 0.13	WF-12: S R	1.200 ± .007 30.48 ± 0.18	WF-17: S R	1.700 ± .008 43.18 ± 0.20	WF-22: S R	2.200 ± .009 55.88 ± 0.23
WF-3: S R	.300 ± .004 7.62 ± 0.10	WF-8: S R	.800 ± .006 20.32 ± 0.15	WF-13: S R	1.300 ± .007 33.02 ± 0.18	WF-18: S R	1.800 ± .008 45.72 ± 0.20	WF-23: S R	2.300 ± .009 58.42 ± 0.23
WF-4: S R	.400 ± .005 10.16 ± 0.13	WF-9: S R	.900 ± .006 22.86 ± 0.15	WF-14: S R	1.400 ± .007 35.56 ± 0.18	WF-19: S R	1.900 ± .009 48.26 ± 0.23	WF-24: S R	2.400 ± .010 60.96 ± 0.25
WF-5: S R	.500 ± .005 12.70 ± 0.13	WF-10: S R	1.000 ± .007 25.40 ± 0.15	WF-15: S R	1.500 ± .008 38.10 ± 0.20	WF-20: S R	2.000 ± .009 50.80 ± 0.23	WF-25: S R	2.500 ± 0.10 63.5 ± 0.25
WF-6: S R	.600 ± .003 15.24 ± 0.13	WF-11: S R	1.100 ± .007 27.94 ± 0.18	WF-16: S R	1.600 ± .008 40.64 ± 0.20	WF-21: S R	2.100 ± 0.09 53.34 ± 0.23		

CONTACT TYPE S: STRAIGHT
R: RIGHT ANGLE