

.100" (2.54mm) Center Crimp Terminal Housing

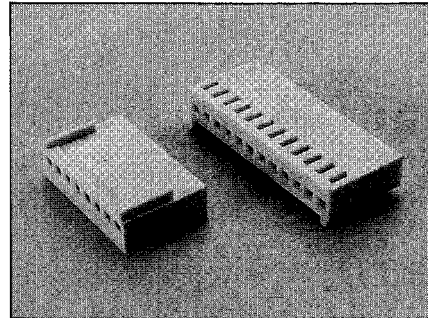
HU Series

Features:

- 2-25 Circuits
- With or without locking ramp
- Nylon (UL 94V-0)
- Mates with .025" (0.64mm) pins
- Accepts double cantilever crimp terminal (2510-T)
- Terminal Retain at Housing — 6.6 lbs. (3.0kg) minimum

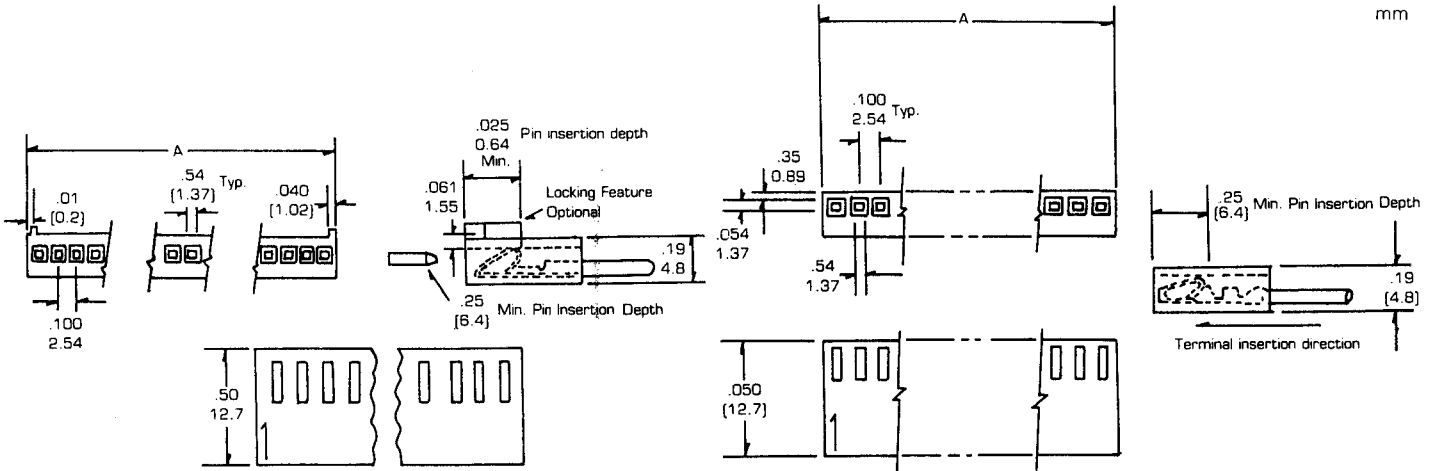
Specifications:

- Current rating: 3A AC, DC
- Voltage rating: 250V AC, Maximum
- Temperature range: -25°C ~ + 90°C
- Contact resistance: Initial Value/10mΩ max.
After environmental testing/20mΩ max.
- Insulation resistance: 1,000 MΩ min
- Withstand Voltage: 1500V AC/minute
- Applicable wires: AWG #30 ~ #22



WITHOUT LOCKING RAMP

WITH LOCKING RAMP



Dimensional Information HU Series

Circuits	Dim. A ± .008 0.20	Circuits	Dim. A ± .008 0.20	Circuits	Dim. A ± .008 0.20	Circuits	Dim. A ± .008 0.20	Circuits	Dim. A ± .008 0.20	Circuits	Dim. A ± .008 0.20
HU-2	.22 5.6	HU-6	.62 15.8	HU-10	1.02 25.9	HU-14	1.42 36.1	HU-18	1.82 46.2	HU-22	2.22 56.4
HU-3	.32 8.1	HU-7	.72 18.3	HU-11	1.12 28.5	HU-15	1.52 38.6	HU-19	1.92 48.8	HU-23	2.32 59.9
HU-4	.42 10.7	HU-8	.82 20.9	HU-12	1.22 31.0	HU-16	1.62 41.2	HU-20	2.02 51.3	HU-24	2.42 61.5
HU-5	.52 13.2	HU-9	.92 23.4	HU-13	1.32 33.5	HU-17	1.72 43.7	HU-21	2.12 53.9	HU-25	2.52 64.0